

# Services

## Habitat –

- Aquatic & Terrestrial Surveys
- Conservation Planning
- Restoration Design
- Analysis & Reporting
- Invasive Species Management

## Environmental Compliance –

- Project Planning & Permitting
- SEPA/NEPA Documentation
- Local Agency Guidelines
- Critical Areas Assessment
- Shoreline Management Act
- Endangered Species Act
- Clean Water Act
- Hydraulic Code

## Wetland Management –

- Wetland Reconnaissance
- Delineation & Rating
- Functions Assessment
- Mitigation Planning
- Restoration
- Monitoring
- Technical Reporting

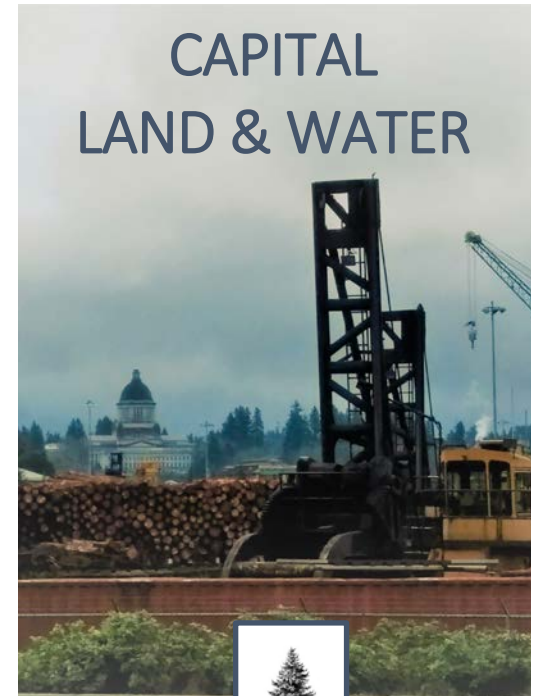
# About Us

Capital Land and Water works to find practical solutions for managing ecological resources. Our experience, knowledge, and relationships are critical components of effective environmental assessment and planning. Whether a single-family home, transportation improvement, or habitat restoration project, we are prepared to support you through the planning and permitting process and help you achieve your project goals.

## Contact

Erik Schwartz, PWS  
Phone: (360) 790-5936  
Email: [Erik@CapLandWater.com](mailto:Erik@CapLandWater.com)

CAPITAL LAND AND WATER, LLC  
PO Box 2834  
Olympia, WA 98507



# CAPITAL LAND & WATER



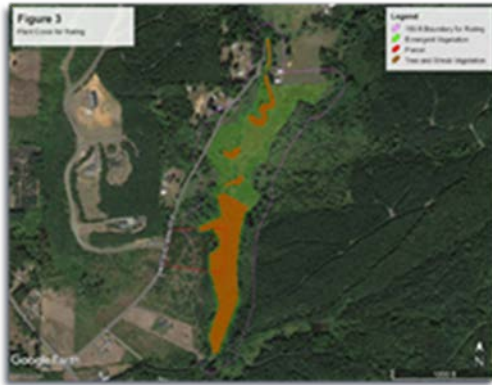
# Ecological & Natural Resources Consulting

*Olympia, WA*



## Habitat

Don't get sideswiped! In property development, transportation, and utility projects, knowing the protected sensitive areas on your property is key to understanding land use and permitting constraints, and making critical decisions about development.



Whether assessing a property for streams and wetlands, Oregon white oaks, mazama pocket gophers, forage fish spawning areas, or other regulated critical areas, Capital Land and Water provides the survey and reporting services to plan, design, permit, and build your project.

## Environmental Compliance

Capital Land and Water will ensure compliance with environmental laws and regulations, and provide guidance for an efficient permitting process. Our goal is due diligence to meet regulatory requirements without excessive levels of analysis and reporting that aren't needed.

We provide a wide range of services to support regulatory compliance, from preparing permit applications, to biological assessments and critical areas reports, and agency coordination.



## Wetland Management

Capital Land and Water is committed to professional assessments based on sound science and more than a decade of technical experience. From determining shoreline and wetland buffers, to assessing ecological functions and potential impacts, to mitigation planning and vegetation restoration, Capital Land and Water has the expertise for a successful project.

Capital Land and Water offers preliminary site assessments including a wetland reconnaissance for a flat cost of just \$500.\*

\*Applies to properties up to 5 acres in Thurston, Mason, Pierce, and Grays Harbor counties. Please contact us for a quote on other properties. We always offer a competitive cost.



## Teaming

Capital Land and Water proudly collaborates with reputable, local firms. Our teaming with local partners allows us to offer multidisciplinary services to adapt and respond to specific project needs. Our partners include experts that allow us to offer comprehensive services such as:

- Land Surveying
- GIS and CAD
- Phase I Environmental Site Assessment
- Geotechnical Investigation
- Environmental/Civil Engineering
- Construction
- Real Estate
- And More

We're also ready to collaborate with your existing team to bring the best possible service for your project.